








OSI 70 / OSI 70-H


Out of Service Indicator



Characteristics

Fixing	welding studs M3 x 8 (faceplate fixing)
Housing	st. steel brushed
Faceplate thickness	2 mm or 3 mm
Connection technology	2 x 1.0 mm ² PVC control cable (200 mm)
Pane	8 mm, polycarbonate, grey
Recall light	 LED   Further colours and symbols available on demand
	U = 24 V AC/DC (±10%)
	I = 140 mA
Option: buzzer	U = 12 V ... 30 V DC
	I = approx. 25 mA
Illumination	separate area illumination
Compliance	  

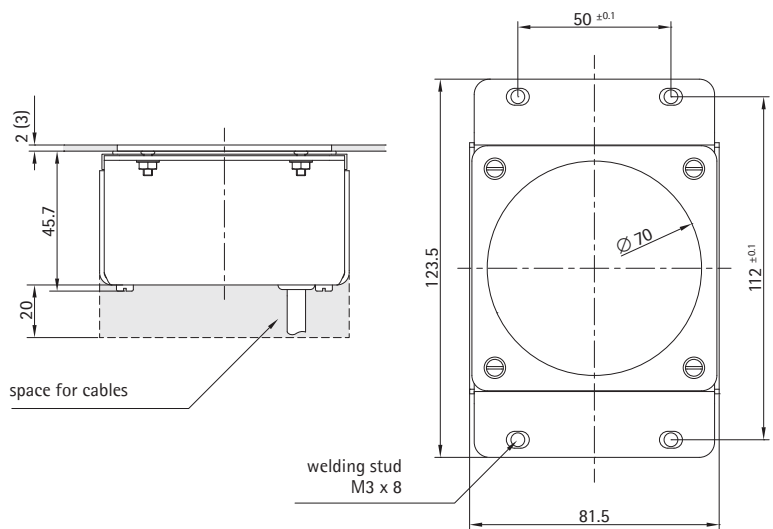
 Please order fixing accessories separately.

 0° OSI 70 standard version

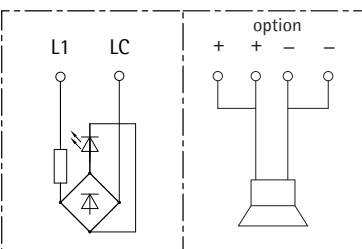
 90° OSI 70-H turned by 90°



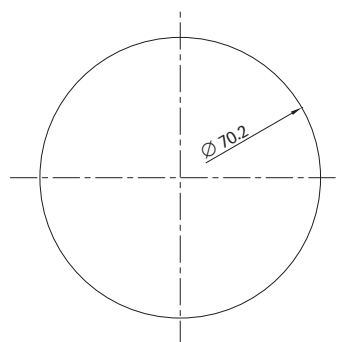
Dimensions



Wiring diagram



Cutout










DAW 70 / DAW 70-H


Direction Arrow



Characteristics

Fixing	welding studs M3 x 8 (faceplate fixing)
Housing	st. steel brushed
Faceplate thickness	2 mm or 3 mm
Connection technology	2 x 1.0 mm ² PVC control cable (200 mm)
Pane	8 mm, polycarbonate, grey
Recall light	 LED   Further colours and symbols available on demand
	U = 24 V AC/DC (±10%) I = 170 mA
Option: buzzer	U = 12 V ... 30 V DC I = approx. 25 mA
Illumination	separate area illumination
Compliance	  

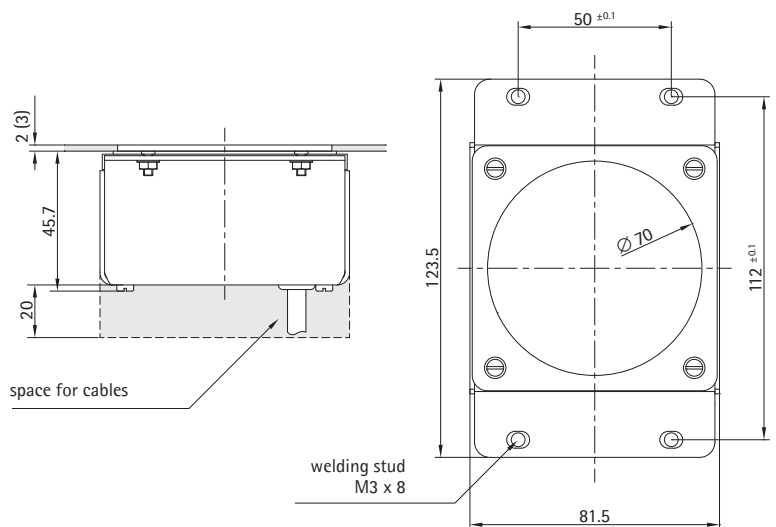
 Please order fixing accessories separately.

 DAW 70
standard version

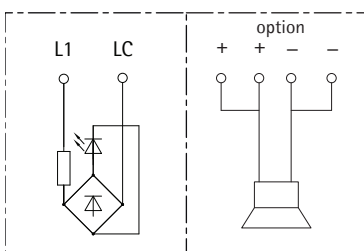
 DAW 70-H
turned by 90°



Dimensions



Wiring diagram



Cutout

